

Heavy-Duty Pipe Cutters

RIDGID® Heavy-Duty Pipe Cutters for fast, burr-free cutting of steel pipes up to 6". Extra-long shank protects adjustment threads, while an extra-large handle is provided for quick, easy adjustment.

- Sturdy cast iron housing.
- Perfectly balanced.
- Hardened cutter wheels of high quality alloy steel.
- By changing the cutter wheel the cutters can be used for other materials (see page 73 for cutter wheel overview).
- Available with 1 wheel, 3 wheels, 4 wheels or with extra wide rollers.

Pipe Cutters with 1 Wheel / 3 Wheel

Can be converted to 3-wheel cutter by replacing rollers with cutter wheels, or ordered as 3-wheel unit for use in areas where a complete turn is not possible.



Model 1-A & 2-A

Cat. No.	Model No.	Std. Wheel	# Wheels	Pipe Capacity Nominal Size		Weight kg	Std. Pack
				inch	mm O.D.		
32810	1-A	33100	1	1/8 - 1 1/4	10 - 43	3,0	1
32820	2-A	33100	1	1/8 - 2	10 - 60	3,2	1
32830	3-S	33120	1	1 - 3	34 - 89	6,9	1
32840	4-S	33120	1	2 - 4	60 - 114	8,2	1
32850	6-S	33145	1	4 - 6	114 - 168	10,8	1
32825	2-A	33100	3	1/8 - 2	10 - 60	3,2	1
32845	4-S	33120	3	2 - 4	60 - 114	8,2	1



Model 3-S, 4-S & 6-S

Pipe Cutters with 4 Wheel

Designed for work in areas where a complete turn is impossible.



Model 42-A

Cat. No.	Model No.	Std. Wheel	# Wheels	Pipe Capacity Nominal Size		Weight kg	Std. Pack
				inch	mm O.D.		
32870	42-A	33105	4	3/4 - 2	10 - 60	3,2	1
32880	44-S	33125	4	2 - 4	60 - 114	9,1	1



Model 44-S

Pipe Cutters with extra wide Rollers

- Wide rollers for perfect tracking and cleaner cuts.
- Especially designed for use with power drives.
- Ideal for use on PE-coated pipes.



Cat. No.	Model No.	Std. Wheel	# Wheels	Pipe Capacity Nominal Size		Weight kg	Std. Pack
				inch	mm O.D.		
32895	202	33100	1	1/8 - 2	10 - 60	3,5	1

Hinged Pipe Cutters

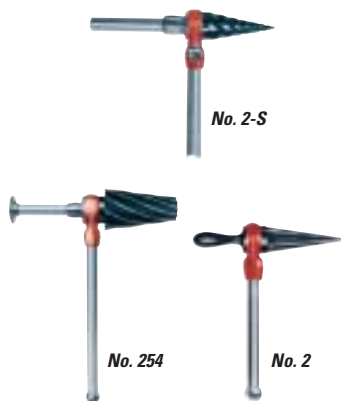
- Designed for rapid cutting of 2" through 12" steel pipe, heavy-wall steel pipe, and cast-iron pipe. Ideal for use where minimal cutter rotation is necessary due to lack of space.



Cat. No.	Model No.	Std. Wheel	# Wheels	Pipe Capacity Nominal Size		Weight kg	Std. Pack
				inch	mm O.D.		
For Steel Pipe							
73162	424-S	75567	4	2 - 4	60 - 114	6,0	1
83080	466-S	75562	4	4 - 6	114 - 168	13,0	1
83145	468-S	75562	4	6 - 8	168 - 219	15,0	1
83165	472-S	75562	4	8 - 12	219 - 324	19,0	1
For Heavy Wall Steel Pipe							
83085	466-HWS	75557	4	4 - 6	114 - 168	13,0	1
83150	468-HWS	75557	4	6 - 8	168 - 219	15,2	1
83170	472-HWS	75557	4	8 - 12	219 - 324	19,1	1
For Cast-Iron Pipe							
74227	424-CI	75572	4	2 - 4	60 - 114	6,0	1
74685	466-CI	33135	4	4 - 6	114 - 168	13,0	1
74700	468-CI	33135	4	6 - 8	168 - 219	15,2	1
74710	472-CI	33135	4	8 - 12	219 - 324	19,1	1
For SML Pipe							
90995	466-D	10026	4	3 - 6	89 - 168	13,0	1

Model 424-S

Pipe Reamers



- No. 2-S Spiral Ratchet Reamer – Self-feeding spiral design for extra-fast and easy hand reaming. Model 2-S Reamer is not suitable for power drive reaming.
- Nos. 2 and 3 Ratchet Reamers – Long taper design will not dig in. Suitable for use with power drives.
- No. 254 Spiral Ratchet Reamer – Hollow center reduces weight. Large pressure plate. Hardened alloy steel cone removable for sharpening.

Cat. No.	Model No.	Description	Capacity		Weight kg	Std. Pack	Replacement Cone Cat. No.
			inch	mm			
34955	2-S	Spiral Reamer	1/4 - 2	6 - 50	3,3	1	35020
34945	2	Straight Reamer	1/8 - 2	3 - 50	3,2	1	34975
34950	3	Straight Reamer	3/8 - 3	9 - 75	5,2	1	35090
34960	254	Spiral Reamer	2 1/2 - 4	62 - 100	6,4	1	35135

For cutter wheels see page 73



Soil Pipe Cutters

RIDGID® Soil Pipe Cutters are designed to cut cement, cast-iron or clay pipes from 2" up to 18".

No. 226



Cat. No.	Model No.	Replac. Chain	Pipe Capacity Nominal Size		Weight kg	Std. Pack
			inch	mm O.D.		
69982	226	33670	2 - 6	50 - 150	8,3	1

- Cuts 2" - 6" (50 mm - 150 mm) cast-iron, cement and clay pipe. Ideal for use in tight spaces. Quick-opening feed screw can be operated with ratchet or any wrench.

Nos. 246, 246S, 246L, 248



Cat. No.	Model No.	Replac. Chain	Pipe Capacity Nominal Size		Weight kg	Std. Pack
			inch	mm O.D.		
32900	246	34575	2 - 6	50 - 150	11,3	1
14991	246S	1*	2 - 8	50 - 200	12,0	1
10531	246L	2*	2 - 12	50 - 300	15,0	1
62797	248	63287	2 - 18	50 - 450	19,0	1

1* = 34575 + 2 x 34570 / 2* = 2 x 34575

- Model 246 cuts 2" - 6" (50 mm - 150 mm) clay, cast-iron and cement pipe. Ratchet-action handle parallels pipe so trench can be minimum width.
- Model 248 has larger diameter cutting wheels and a longer handle. Designed to cut up to 18" (450 mm) concrete / clay pipe.

No. 228
Soil Pipe Assembly Tool



Cat. No.	Model No.	Pipe Capacity Nominal Size		Weight kg	Std. Pack
		inch	mm O.D.		
32905	228	2 - 8	50 - 200	10,3	1

- Handles all 2" through 8" gasketed soil pipe without extra, loose attachments. Easy assembly of Y, tee, and elbow fittings, as well as straight lengths from any angle.



No. 258 & 258XL Power Pipe Cutter

Pipe capacity: 2 1/2" - 8"
8" - 12"

RIDGID® Power Pipe Cutters are designed to cut pipe quickly, cleanly and with minimal effort. The unique design incorporates the RIDGID® 700 Power Drive to rotate a displacement-type cutter. With the 258 you can cut off 4" pipe in under 60 seconds.

Features

- Easily cuts long and short pieces of pipe by displacing instead of removing pipe material.
- No abrasive dust, dangerous sparks or open flame.
- Quickly cuts steel pipe with minimal burr.
- Heavy duty design for field or shop use.
- Can be operated by 1 person that controls the feeding rate by pumping the hydraulic foot pump throughout the operation.
- Utilises a powerful 10 ton hydraulic cylinder.
- Model 258 cuts 2 1/2" to 8" diameter pipe; 258XL cuts 8" to 12" diameter pipe.

Cat. No.	Model No.	Description	Capacity inch			Weight kg	Std. Pack
			Max. wall thickness mm				
			Steel 8,2	PVC 12,7	Copper 3,1		
50767	258	Pipe Cutter	2 1/2 - 8	2 1/2 - 8	2 1/2 - 6	43,0	1
17871	258 / 700	258 Cutter with No. 700, 230 V	2 1/2 - 8	2 1/2 - 8	2 1/2 - 6	57,0	1
17881	258 / 700	258 Cutter with No. 700, 115 V	2 1/2 - 8	2 1/2 - 8	2 1/2 - 6	57,0	1
58227	258XL	Pipe Cutter	8 - 12			66,0	1



Standard Equipment

- One (1) RIDGID® 774 Square Drive Adapter.
- One (1) 8 1/2" HD Cutter Wheel Assembly.
- One (1) Hydraulic Ram and Foot Pump.
- Two (2) 2 1/2" to 12" Ball Transfer Pipe Supports (Model 258PS).

Accessories

Cat. No.	Model No.	Description	Weight kg	Std. Pack
60002	258PS	Pipe Support for 2 1/2" - 12"	2,0	1
50812	E-258	8 1/2" Steel Cutter Wheel	1,0	1
59512	258FP	Hydraulic Foot Pump	7,0	1
54397	—	Trolley (258 / 258XL)	10,5	1
58222	E258T	Thin Wall Cutter Wheel	1,4	1
60007	BTH-9	Replacement Ball Transfer Head Set	2,5	2
50272	—	Hydraulic oil (946 ml)	0,9	1



When using 258 and 258XL pipe cutters with long lengths of pipe, it is especially important to properly support the pipe to prevent cutter wheel damage. Extra pipe supports may be needed and the work area must be level.

Thin wall pipe cutter wheel for No. 258XL cuts schedule 10 pipe without deforming the outside diameter. For Model 700 Power Drives, see page 28.



Tubing Cutters

RIDGID® tubing cutters are designed to provide a life time of clean cuts.

Midget Tubing Cutters



NEW

No. 101-ML



No. 117



No. 118

Nos. 101, 103, 104, 117, 118

- Ideal for use in restricted spaces on small diameter.
- Designed for hard and soft copper, aluminum, brass, and plastic tubing.
- Strong, lightweight slide and wheel housing.
- The models 117 and 118 are fitted with a feed assisting spring mechanism for controlled and automatic advance. Not to be used on multilayer tubing.
- Models 101 and 118 spare cutter wheel in knob included.

Cat. No.	Model No.	Description	Std. Wheel	Capacity mm	Weight kg	Std. Pack
For Copper Tubing						
32975	103	Midget Cutter	33185	3 - 16	0,1	6
32985	104	Midget Cutter	33185	5 - 24	0,1	6
40617	101	Midget Cutter with Spare Wheel	33185	6 - 28	0,1	6
For Copper Tubing with feed assisted advance spring mechanism						
97787	117	Feed Assisted Midget Cutter	33185	5 - 24	0,1	6
86127	118	Feed Assisted Midget Cutter	33185	6 - 28	0,1	6
For Multilayer Tubing						
21938	101-ML	Midget Cutter with Spare Copper Wheel	74720	6 - 28	0,1	6

Enclosed Feed Tubing Cutters



Cat. No.	Model No.	Description	Std. Wheel	Capacity mm	Weight kg	Std. Pack
For Copper Tubing						
66737	150L	Enclosed Feed Cutter	33185	6 - 35	0,2	6
33055	205	Ratcheting Encl. Feed Cutter	33185	6 - 60	0,8	1
For Steel Tubing						
66742	150LS	Above with Heavy Duty Wheel	33190	6 - 35	0,4	1
33070	205S	Above with Heavy Duty Wheel	33190	6 - 60	0,8	1



No. 150L



No. 205S

Nos. 150L and 205

- Designed to cut hard and soft copper, aluminium, brass and multilayer tubes.
- Can be adapted with cutter wheels for steel.
- Equipped with a fold-away reamer.
- Features an enclosed feed screw to eliminate clogging and jamming.
- Model 205 has an additional quick-acting mechanism.
- Model 205S is suitable for stainless steel.
- Spare cutter wheel included.

Screw Feed Tubing Cutters



No. 15SI

Cat. No.	Model No.	Description	Std. Wheel	Capacity mm	Weight kg	Std. Pack
For Copper Tubing						
32910	10	Screw Feed Cutter	33160	3 - 25	0,4	6
32920	15	Screw Feed Cutter	33160	5 - 28	0,6	6
32930	20	Screw Feed Cutter	33160	16 - 54	0,8	1
32940	30	Screw Feed Cutter	33170	25 - 79	1,6	1
For Steel Tubing						
32915	10S	10 with Heavy Duty Wheel	33165	3 - 25	0,4	6
32925	15S	15 with Heavy Duty Wheel	33165	5 - 28	0,6	6
32935	20S	20 with Heavy Duty Wheel	33165	16 - 54	0,8	1
32950	30S	30 with Heavy Duty Wheel	33175	25 - 79	1,6	1
For Stainless Steel Tubing						
97212	15SI	Screw Feed Cutter Stainless Steel	96397	5 - 28	0,6	6

Nos. 10, 15, 20 and 30

- Designed to cut copper, brass, aluminum, and thin wall steel pipes.
- Models 10, 15 and 20 feature a fold-away reamer.
- All models have a screw feed assembly for longevity and smoothness.
- Model 15SI developed for stainless steel cutting purposes.

Quick-Acting Tubing Cutters



No. 151

No. 151-ML

Cat. No.	Model No.	Description	Std. Wheel	Capacity mm	Weight kg	Std. Pack
For Metallic Tubing						
31632	151	Quick-Acting Tubing Cutter	33185	6 - 42	0,4	6
31642	152	Quick-Acting Tubing Cutter	33185	6 - 66	0,9	1
36597	153	Quick-Acting Tubing Cutter	33185	32 - 90	0,9	1
31652	154	Quick-Acting Tubing Cutter	33170	48 - 116	1,4	1
31662	156	Quick-Acting Tubing Cutter	33170	100 - 170	1,9	1
For Plastic Tubing						
31637	151-P	Quick-Acting Tubing Cutter	74720	10 - 40	0,4	1
31647	152-P	Quick-Acting Tubing Cutter	74720	10 - 63	0,9	1
36592	153-P	Quick-Acting Tubing Cutter	74720	25 - 75	0,9	1
31657	154-P	Quick-Acting Tubing Cutter	74730	50 - 110	1,4	1
59202	154-PE	Quick-Acting Tubing Cutter	83235	50 - 110	1,4	1
31667	156-P	Quick-Acting Tubing Cutter	74735	110 - 160	1,9	1
39957	156-PE	Quick-Acting Tubing Cutter	83235	110 - 160	1,9	1
For Multilayer Tubing						
66747	151-ML	Quick-Acting Tubing Cutter	66772	10 - 50	0,5	1

Nos. 151, 153, 154, 156

- Designed for cutting plastic or metallic tubing.
- Models 151 - 156 feature a quick-acting design.
- I-beam construction, hardened wear surfaces and thrust bearing slide assemblies for smooth operation.
- Models 151 and 152 feature fold-away reamers.
- Model 151-ML is specially designed for multilayer pipe.

For cutter wheels see page 73



Plastic Pipe Cutters

Rugged precision shears for fast, effortless single stroke or ratchet cutting of all types of plastic tube and pipe.

- PC-1250 for all types of plastic materials. Quick change reversible blade = 2 x blade life.
- PC-1375, RC-1625 for PVC, CPVC, PEX, PE, PB, Multilayer and rubber hose.
- Lower handle has raised ridges 1/2" apart for quick, easy measurements and improved grip.
- RC-1625 comprises a ratcheting mechanism.

Cat. No.	Model No.	Description	Capacity mm	Weight kg	Std. Pack
23488	PC-1250	Single Stroke Cutter	3 - 42	0,1	1
23493	PC-1375	Single Stroke Cutter	3 - 35	0,32	1
23498	RC-1625	Ratchet Cutter	3 - 42	0,7	1
12821	1491	Ratchet Cutter	3 - 27	0,3	1
12841	1492	Ratchet Cutter	3 - 42	0,5	1
12831	1493	Ratchet Cutter	3 - 63	1,2	1
26821	1435N	Ratchet Cutter	6 - 35	0,56	1
20191	1442N	Ratchet Cutter	6 - 42	0,74	1

Models PC-1250, 1435N and 1442N are not suitable for multilayer pipes.



No. RC-1625



No. PC-1250



No. PC-1375

Spares for plastic pipe cutters



	PC-1250	PC-1375	RC-1625	1491	1492	1493	1435N	1442N
Blade	26803	25588	27858	22066	22076	22086	68616	42126
Ratchet mechanism	-	-	-	66916	66926	47527	-	-
Spring set	-	-	-	66896	66906	47522	-	-
Service kit	-	-	-	-	-	-	68626	41326

Reamers



Inner-Outer Reamer

- Plastic construction with long wearing alloy steel blades.
- Designed to give fast, professional reaming on copper, aluminium, brass and other types of tubing.



Stainless Steel Reamer

- Anodised aluminium hilt and hardened steel reamer cone.
- Allows fast and clean inner and outer reaming on stainless steel tubing from 6 mm up to 54 mm.

Cat. No.	Model No.	Description	Capacity mm	Weight kg	Std. Pack
34965	127	Inner-Outer Reamer	6 - 37	0,1	1
35231	223	Stainless Steel Reamer	6 - 36	0,3	1
20101	227	Stainless Steel Reamer	12 - 54	0,6	1
35155	72	Deburring Tool	12 - 40	-	6
64962	73	Deburring Tool	40 - 76	-	6
64967	74	Deburring Tool	100	-	6



Plastic Pipe and Tubing Deburring Tool

- High-grade steel, slip-resistant vinyl hand grip.
- Ideal for removing outside ridges and inside burrs.



122 Cutting Machine for Stainless Steel and Copper

Ideal for on-site preparation of stainless steel and copper tubing.

Tube capacity

- 12 mm to 60 mm O.D., (DN10 to DN50) up to 1,5 mm wall thickness.

Features

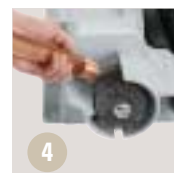
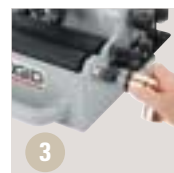
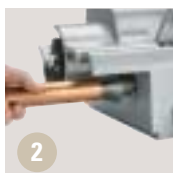
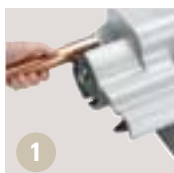
- Powerful 230 V, 360 W induction motor drives rollers at 450 RPM.
- Strong, cast aluminium construction.
- Cutting handle adjusts to accommodate different tubing sizes.
- Specially designed cutter wheel with bearings.
- Optional stainless steel inner reamer.
- Spring loaded guide rollers ensure a straight cut with no tracking.
- Large carrying handle for easy transport to the job site.
- Built-in scale for quick, easy measuring.



Cat. No.	Model No.	Description	Weight kg
96362	122	Stainless Steel Tube Cutting Machine	22,70
33541	—	Inner Reamer Stainless Steel	0,80
33551	—	Cutter Wheel Stainless Steel	—
10343	—	Cutter Wheel Stainless Steel Pin (2-Pack)	—
Accessories for copper			
94687	—	Inner Reamer Copper	0,80
33175	—	Cutter Wheel Copper	—
34360	—	Cutter Wheel Copper Pin (10-Pack)	—
93717	—	1/2" Fitting Brush for 12 mm (set of 3)	0,24
93722	—	3/4" Fitting Brush for 18 mm (set of 3)	0,26
93727	—	1" Fitting Brush for 25 mm (set of 3)	0,27
93732	—	1 1/4" Fitting Brush for 32 mm (set of 3)	0,29
93737	—	1 1/2" Fitting Brush for 40 mm (set of 3)	0,77
93742	—	2" Fitting Brush for 54 mm (set of 3)	0,79
94682	—	O.D. Cleaning Brush	0,44
46105	—	O.D. Debur Disk	0,57
93747	—	Quick-Change Collet	0,95
93707	—	Fitting Brush Storage Kit includes: Mountable Storage Rack, Quick-Change Collet, Spare Cutter, Wheel and Brushes (1/2", 3/4", 1", 1 1/4", 1 1/2", 2")	1,39
93712	—	Fitting Brush Holder	2,63

Clean, cut and ream 12 mm to 54 mm copper tubing and fittings with these accessories.

- 1 The heavy-duty O.D. Cleaning Brush cleans the outside diameter of 12 mm to 54 mm copper tubing quickly and easily.
- 2 The Inner Reamer removes turbulence-causing burrs quickly and effortlessly.
- 3 The fitting brush attachments can be used to clean fittings fast.
- 4 The Debur Disk is used to grind the O.D. edge to help with tight fittings.



1390M Threaded Rod Cutter

- Designed to cut threaded rods used to hang pipes for air conditioning, sprinkler installations and other lightweight frames from the ceiling.
- Makes clean cuts without damaging thread.
- No burr needs to be removed.



Cat. No.	Description	Weight kg	Std. Pack
20271	Threaded Rod Cutter with 8 mm Blades	5,4	1
26891	Threaded Rod Cutter with 10 mm Blades	5,4	1

Replacement Blades			
Cat. No.	Description	Weight kg	Std. Pack
58406	Set of 6 mm Blades	—	1
57116	Set of 8 mm Blades	—	1
57126	Set of 10 mm Blades	—	1



Bolt Cutters

- RIDGID® Bolt Cutters are designed for cutting rod, wire mesh, concrete form ties, cable, and bolts.
- Slim head permits cutting close to surface.
- Quick, easy adjustment through use of a cam / bolt mechanism.
- Jaws are made of hardened alloy steel.

Cat. No.	Model No.	Type	Capacity / Metals						Overall Length		Weight kg	Std. Pack
			Soft (15RC)		Medium (31RC)		Hard (42RC)		in.	mm		
			in.	mm	in.	mm	in.	mm				
14213	S14	Center Cut	5/16	7,9	1/4	6,4	3/16	4,8	15	379	1,0	1
14218	S18	Center Cut	3/8	9,5	5/16	7,9	1/4	6,4	19	485	1,5	1
14223	S24	Center Cut	7/16	11,0	3/8	9,5	5/16	7,9	26	652	2,7	1
14228	S30	Center Cut	1/2	12,7	7/16	11,0	3/8	9,5	31	800	4,0	1
14233	S36	Center Cut	9/16	14,3	1/2	12,7	7/16	11,0	38	958	6,1	1
14238	S42	Center Cut	11/16	17,5	9/16	14,3	1/2	12,7	44	1115	8,3	1

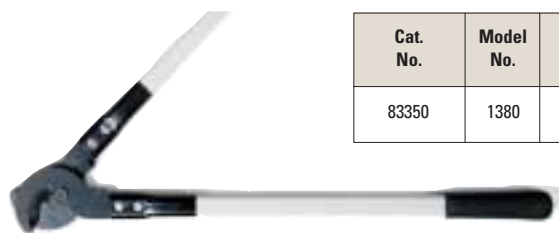


Replacement Head Assemblies

Cat. No.	Description	Weight kg	Std. Pack
18363	S14 Head Assembly	1,0	1
18368	S18 Head Assembly	1,5	1
18373	S24 Head Assembly	2,7	1
18378	S30 Head Assembly	4,0	1
18383	S36 Head Assembly	6,1	1
18388	S42 Head Assembly	8,3	1

Cable Cutters

- No. 1380 Cable Cutter is designed to shear-cut insulated aluminium and copper cable through 1 3/8" diameter, and 750 MCM*.
- Drop-forged, heat-treated, alloy steel jaws shear cable with minimum distortion of internal wires.
- Fitted with fiberglass-insulated handles and rubber grips.



Cat. No.	Model No.	Description	Capacity		Weight kg	Std. Pack
			in.	mm		
83350	1380	Aluminium and Copper Cable Cutter	1 3/8	35	2,0	1

No. 1380
Cable Cutter

*Not intended for cutting steel or ACSR cable.

Aviation Snips and Offset Snips

- Ideal for cutting 18-gauge or lighter cold-rolled sheet steel.
- Compound action results in maximum jaw power with minimum effort.



No. 796 Offset Snip

Cat. No.	Model No.	Description	Length		Cut		Weight kg	Std. Pack
			in.	mm	in.	mm		
54115	786	Snip - Cuts Right	10 1/2	267	1 3/8	35	0,5	6
54120	787	Snip - Cuts Left	10 1/2	267	1 3/8	35	0,5	6
54125	788	Snip - Cuts Straight	10 1/2	267	1 1/2	38	0,5	6
54130	789	Light Metal Shear	6 1/2	165	1 1/4	32	0,1	6
16202	796	Offset Snip - Cuts Right	10 1/2	267	1 1/2	38	0,5	6
16207	797	Offset Snip - Cuts Left	10 1/2	267	1 1/2	38	0,5	6



Screw Extractors

(with Sliding Turnnut)



Cat. No.	Mod. No.	Screw Diameter		Use Drill		Flute Diameter		Overall Length		Maximum Depth		Wt. kg	Std. Pack
		inch	mm	inch	mm	inch	mm	inch	mm	inch	mm		
35535	1	1/4	6	1/8	3	0,139	3,5	2 5/16	59	1	25	0,014	1
35540	2	5/16	8	3/16	5	0,205	5,2	2 3/4	70	1	25	0,028	1
35545	3	3/8	9,5	1/4	6	0,272	6,9	3 1/16	78	1	25	0,035	1
35550	4	7/16	11	5/16	8	0,338	8,6	3 9/16	84	1	25	0,050	1
35555	5	1/2 - 9/16	13 - 14	11/32	9	0,374	9,5	3 3/4	95	1	25	0,064	1
No Turnnut													
35560	6	5/8	16	7/16	11	0,471	12,0	4 1/8	105	2	51	0,085	1
35565	7	3/4	19	1/2	13	0,538	13,7	4 1/2	114	2	51	0,113	1
35570	8	7/8 - 1	22 - 25	5/8	16	0,665	16,9	4 3/4	121	3	76	0,184	1
Screw extractor sets:		35575 Screw Extractor Set No. 3				Includes 3, 4, 5				0,300		1	
		35580 Screw Extractor Set No. 5				Includes 1, 2, 3, 4 and 5				0,300		1	

No. 10

Screw Extractor Set Contains 20 Precision Tools

- One each of Extractor Nos. 1 to 5 inclusive with turnnuts.
- Drills No. 1 to 5 inclusive.
- Drill guides Nos. 921 to 1821 inclusive.
- Pre-formed plastic box provides convenient storage.



Cat. No.	Model No.	Description	Capacity		Weight kg	Std. Pack
			inch	mm		
35585	10	Screw Extractor Set	1/4 - 1/2	6 - 13	0,6	1

No. 25

Screw and Pipe Extractor Set Contains

- One each of screw extractors Nos. 1 to 8 inclusive (Nos. 1 to 5 Extractors with turnnuts).
- Drill Nos. 1 to 8 inclusive.
- One No. 36; and complete set of drill guides and bushings. Maximum depth extractor range 1" to 3".
- Pipe extractors Nos. 80 to 85 also included.
- These precision tools are packed in a fitted compartment box.

Cat. No.	Model No.	Description	Capacity			Weight kg	Std. Pack
			Type	inch	mm		
35590	25	Screw and Pipe Extractor Set	Screw Pipe	1/4 - 1 3/8 - 1	6 - 25 3 - 25	4,2	1

High-Speed Twist Drills



Cat. No.	Model No.	Diameter O.D.		Overall Length		Weight kg	Std. Pack
		inch	mm	inch	mm		
35720	1	1/8	3	2 1/2	63	0,007	1
35725	2	3/16	5	3	73	0,014	1
35730	3	1/4	6	3 1/2	89	0,021	1
35735	4	5/16	8	4	102	0,035	1
35740	5	11/32	9	4 1/2	114	0,043	1
35745	6	7/16	11	4 3/4	121	0,071	1
35750	7	1/2	13	5	127	0,099	1
35755	8	5/8	16	5 1/2	139	0,156	1
35760	36	1/4	6	6	152	0,043	1

Replacement Drill Guides

(One-Piece Type)



Cat. No.	Model No.	Diameter O.D.		Overall Length		Use Drill		Weight kg	Std. Pack
		inch	mm	inch	mm	inch	mm		
35765	921	9/32	7,1	1 3/16	30,0	1/8	3,0	0,007	1
35770	1021	5/16	7,9	1 3/16	30,0	1/8	3,0	0,014	1
35775	1121	11/32	8,7	1 3/16	30,0	1/8	3,0	0,014	1
35780	1221	3/8	9,5	1 3/16	30,0	1/8	3,0	0,014	1
35785	1321	13/32	10,0	1 3/16	30,0	3/16	5,0	0,014	1
35790	1421	7/16	11,1	1 3/16	30,0	3/16	5,0	0,021	1
35795	1521	15/32	11,9	1 3/16	30,0	3/16	5,0	0,021	1
35800	1621	1/2	12,7	1 3/16	30,0	3/16	5,0	0,028	1
35805	1721	11/32	13,5	1 3/16	30,0	1/4	6,0	0,028	1
35810	1821	9/16	14,3	1 3/16	30,0	1/4	6,0	0,028	1



No. 5 and No. 25 sets