

# Pressure Test Pumps

Tests all types of installations such as heating, compressed air and refrigeration systems, oil installations, fire lines and small bore pipelines. The automatic pressure holding valves enables the user to easily pressurize the system. Compatible fluids include water, oil and ethylene glycol. Can be connected to water supply for rapid filling.

## Test Pump



Cat. No.	Model No.	Description	Weight kg	Std. Pack
50072	1450	Pressure Test Pump, 50 Bar	6,4	1
18811	1450C	Pressure Test Pump*, 50 Bar	6,4	1

\*1450C is a Model without gauge. (1/4" BSPT Connection)

### Features

- Very low effort required to operate.
- Pressure maintained automatically - no valve to be closed manually.
- Filter on inlet and outlet for better reliability.
- Two stage lever action for fast filling of system and pressurization.
- Plastic container with capacity of 13,5 l (water, oil, ethylene glycol).
- Connection: 1/2" BSPP.
- Volume / stroke: 38 cm<sup>3</sup>.
- Unit build of aluminium and a carbon enhanced PTFE piston pump for longer life.

## Electric Test Pump

Fast and accurate. Ideal for testing large installations. Supplied with control block to test systems up to 25 bar. A 60 bar control block is available for high pressure systems.



Cat. No.	Model No.	Description	Weight kg	Std. Pack
19021	1460-E	Electric Test Pump 230 V, 25 Bar, 1580 W	20,0	1
19031	1460-E	Electric Test Pump 115 V, 25 Bar	20,0	1
19041	1460-E	Electric Test Pump 230 V (Switz.), 25 Bar	20,0	1

Cat. No.	Model No.	Description	Weight kg	Std. Pack
43666	—	Control Block 25 Bar	2,0	1
43676	—	Control Block 60 Bar	2,0	1

### Features

- 3 plunger ceramic piston pump for slow pressure build up and longer life.
- Quick coupling system to disconnect control block and gauge. This can be left on circuit being tested. Pump can be used to pressurize another circuit with second accessory control block.
- Stainless steel container (non acid liquids).
- Water flow: 9 l/min.
- Oil (SAE 30).

# Electric Pipe Freezers

Fast electric pipe freezing for maintenance or repair work. Eliminates the need to drain system. The RIDGID® SF-2200 and SF-2500 are self-contained mini refrigeration units.

## Model SF-2200 SuperFreeze

For freezing of 1/4" to 2" steel pipe and 10 mm to 65 mm copper, with the same unit!



### Standard equipment

- Set of 2 adapters for 1/4", 3/8", 1/2" and 3/4" pipe.
- Set of 2 adapters for 1" and 1 1/4" pipe.
- Set of 2 velcro straps.
- Two bottles of "cool gel" for optimum freezing performance.

### Features

- Powerful 387 W rotary compressor.
- Cylindrical freezer heads allow quick and easy adapter changing.
- Hose connected perpendicularly to freezer head. Allows easier working in restricted spaces and on pipes close to wall or near floor.
- 2,5 mm thick, 1,82 m long rubber hoses with protective springs for longer life.
- Optional adapters for 1 1/2" and 2" pipe and for work in tight spaces.

**Fast** The powerful SuperFreeze compressor forms frozen plugs in just a few minutes.

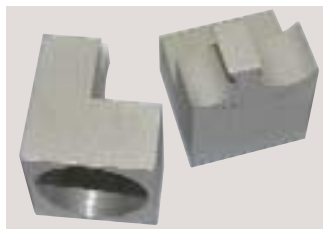
**Portable** No bulky gas cylinders. Self-contained unit, with transport resistant rotary compressor, is easily carried from job to job.

**Safe** No dangerous dry ice or toxic fumes. Contains CFC free refrigerant.

**Convenient** Repairs can be made close to the frozen area.



Cylindrical freezer heads for fast adapter changing. Perpendicular hose allows easier working.



Optional adapter is designed to fit on pipe close to wall or floor.

Cat. No.	Model No.	Description	Weight kg	Std. Pack
27841	SF-2200	Pipe Freezer, 230 V	24,0	1
74096	—	Adapter 1/4", 3/8", 1/2", 3/4" (Set of 2)	—	1
74106	—	Adapter 1", 1 1/4" (Set of 2)	—	1
74116	—	Adapter 1 1/2", 2" (Set of 2)	—	1
75816	—	Adapter for Tight Spaces (2) 18/22 mm	—	1
75826	—	As above, 12/16 mm	—	1
75836	—	As above, 12/15 mm	—	1
74946	—	Cool Gel (1 bottle) 237 ml	—	1
65942	—	Clamp Bar	—	1
69707	—	Velcro Straps (Set of 2)	—	1



The SF-2200 is designed for frequent use on small diameter pipes and occasional freezing of up to 2" pipe. For faster freezing of 1 1/2" to 2" pipe we recommend using the model SF-2500.

# Model SF-2500 SuperFreeze

For fast freezing up to 2" pipe.



Cat. No.	Model No.	Description	Weight kg	Std. Pack
68832	SF-2500	Pipe Freezer, 230 V	23,0	1
68827	SF-2500	Pipe Freezer, 115 V	23,0	1
68862	—	Set of 2 End Adapters 22 mm (1/2" Fe) SF-2500	—	1
72422	—	Set of 2 End Adapters 28 mm (3/4" Fe) SF-2500	—	1
66986	—	Set of 2 End Adapters 12 mm 15/16 mm	—	1
65976	—	Set of 2 End Adapters 18 mm (3/8" Fe), 22 mm (1/2" Fe)	—	1
65942	—	Clamp Bar	—	1
69707	—	Velcro Straps (Set of 2)	—	1

### Standard equipment

- Standard sizes on freezing head: 1", 1 1/4", 1 1/2" and 2".
- Set of 2 adapters for 1/2" and 3/4" pipe.
- Spray bottle.
- Clamp bar.
- Set of 2 velcro straps.

### Features

- Capacity 1/4" to 2" steel pipe and 10 mm to 65 mm copper.
- 449 W Rotary compressor.
- 2,5 mm Thick rubber hoses. 2,5 m long.
- Ideal for working on overhead pipes.
- Two fans for optimum cooling.

# Descaling Pumps

For descaling and restoring installations.



### Features

- Cleans any closed circuit system efficiently.
- High performance flow reversal valve allows scale to be removed from both sides.
- Ideal for descaling boilers, heat exchangers, closed heating systems.
- Scaling inside of a closed circuit reduces dramatically the capacity. To remove this, we offer 2 pumps for an easy maintenance.
- Both with a vertical axis to have a higher and more powerful flow.

Cat. No.	Model No.	Motor	Flow rate l / min	Discharge head m	Tank l	Hose length m	Connection inch	Adapters incl. inch	Maximum temp. °C	Applications		Weight kg	Std. Pack
										Descaling	Restoring		
57276	DP-13	0,15 HP, 110 W, 230 V	40	10	13	2 x 2	1/2	3/8, 3/4	50	•	—	6,0	1
34051	DP-24	0,45 HP, 330 W, 230 V	90	20	35	2 x 2	1/2	3/8, 3/4	50	•	•	9,0	1

# Soldering Guns

RIDGID® electrical soldering guns give the operator the benefit of versatility and safe operation. Reduces the risk of fire and damaging the pipe by overheating. Ideal for maintenance and installation purposes.

## Combi Electric Soldering Gun



Cat. No.	Model No.	Description	Weight kg	Std. Pack
27491	—	Combi Soldering Gun, 230 V	17,0	1
27541	—	Combi Soldering Gun, 115 V	17,0	1
73296	—	Gun incl. cable 4 m	3,50	1

### Features

- A real 3-in-1 tool.
- Can be used for soft soldering on 6 to 54 mm pipes.
- 2200 W.
- Allows silver brazing (hard soldering) on pipes up to 20 mm (requires min. 14% silver).
- Can be used as a thawing device for unfreezing pipes (thawing cables optional).
- Supplied with graphite and bar electrodes, 250 g of soldering flux paste and 500 g of soft solder.

## Compact Electric Soldering Gun



Cat. No.	Model No.	Description	Weight kg	Std. Pack
27501	—	Compact Soldering Gun with Metal Case, 230 V	11,0	1
27531	—	Compact Soldering Gun with Metal Case, 115 V	11,0	1

### Features

- A high quality tool that will easily solder copper pipe from 6 to 22 mm in diameter.
- 1200 W.
- Safer to use than soldering with a torch. Reduces the risk of fire.
- Supplied with bar electrodes, 250 g of soldering flux paste and 500 g of soft solder.

# Accessories for Electrical Soldering Guns

## Soft Solder



Cat. No.	Description	Weight kg	Std. Pack
73246	Soft Solder	0,500	1

## Soldering Flux Paste



Cat. No.	Description	Weight kg	Std. Pack
73236	Soldering Flux Paste	0,250	1

## Extension Cable, 4 m



Cat. No.	Description	Weight kg	Std. Pack
73256	Extension Cable, 4 m	5,000	1

## Thawing Cables, 5 m



Cat. No.	Description	Weight kg	Std. Pack
73266	Thawing Cables, 5 m	6,000	1

## Graphite Electrodes



Cat. No.	Description	Weight kg	Std. Pack
73276	Graphite Electrodes	0,100	1

*Do not use for hard soldering.*

## Bar Electrodes



Cat. No.	Description	Weight kg	Std. Pack
73286	Bar Electrodes	0,100	1

## Copper Cleaning Brush

- Combines tube cleaning and fitting brush into one hand tool.



Cat. No.	Description	Weight kg	Std. Pack
34142	Copper Cleaning Brush (1/2" - 3/4")	0,091	1



# Tube Expanders

Hand-operated, single-stage expander is designed to expand tubing for fast, accurate joints in soft copper, aluminium, and soft steel tube without using fittings.

Free-floating and self-centering expander mechanism.

Expander segments are made from high-quality hardened steel.

## Expander Only



Cat. No.	Model No.	Description	Weight kg	Std. Pack
15071	S	Tube Expander Tool	0,70	1

## Expander Sets



Cat. No.	Model No.	Description	Weight kg	Std. Pack
10411	A	Expander Set 12, 15, 18, 22 mm	2,5	1
15181	T	Expander Set 12, 14, 16, 18, 22 mm	2,5	1
16051	U	Expander Set 12, 15, 22, 28 mm	2,5	1
16971	W	Expander Set 12, 14, 16, 18, 22, 28, 32, 40 mm	3,3	1
17411	X	Expander Set 3/8", 1/2", 5/8", 3/4", 7/8", 1 1/8"	3,0	1
58747	—	Case	—	—

## Metric Expander Heads



Cat. No.	Model No.	Description	Weight kg	Std. Pack
10371	—	Expander Head 8 mm	0,20	1
10051	—	Expander Head 10 mm	0,20	1
10061	—	Expander Head 12 mm	0,20	1
10071	—	Expander Head 14 mm	0,20	1
10081	—	Expander Head 15 mm	0,24	1
10091	—	Expander Head 16 mm	0,24	1
10101	—	Expander Head 17 mm	0,24	1
10111	—	Expander Head 18 mm	0,24	1
10121	—	Expander Head 20 mm	0,24	1
10131	—	Expander Head 22 mm	0,26	1
10191	—	Expander Head 25 mm	0,26	1
10141	—	Expander Head 28 mm	0,26	1
10231	—	Expander Head 32 mm	0,30	1
10241	—	Expander Head 34 mm	0,30	1
10151	—	Expander Head 35 mm	0,26	1
10221	—	Expander Head 36 mm	0,26	1
10201	—	Expander Head 40 mm	0,26	1
10161	—	Expander Head 42 mm	0,30	1
10171	—	Expander Head 45 mm	0,30	1
10211	—	Expander Head 54 mm	0,26	1

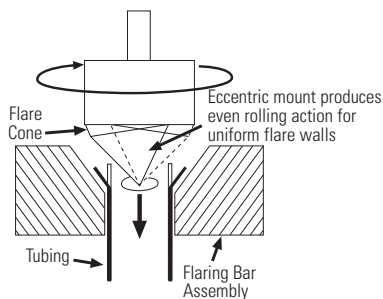
## Imperial Expander Heads



10251	—	Expander Head 3/8"	0,26	1
10261	—	Expander Head 1/2"	0,26	1
10271	—	Expander Head 5/8"	0,26	1
10281	—	Expander Head 3/4"	0,26	1
10291	—	Expander Head 7/8"	0,26	1
10301	—	Expander Head 1"	0,26	1
10311	—	Expander Head 1 1/8"	0,26	1
10321	—	Expander Head 1 1/4"	0,26	1
51206	—	Expander Head 1 3/8"	0,26	1
10341	—	Expander Head 1 1/2"	0,26	1
10351	—	Expander Head 1 5/8"	0,26	1
10361	—	Expander Head 1 3/4"	0,26	1

# No. 458R Ratchet Flaring Tool

Provides smooth, uniform flares with minimum effort. A ratchet feed screw handle turns easily. Hardened steel flaring cone, eccentrically mounted in needle bearings, produces rolling action for even metal flow, giving uniform flare walls without galling. For aluminium, soft copper, steel, thin wall stainless steel, hard copper and brass tubing.



Cat. No.	Model No.	Type	Sizes	Weight kg	Std. Pack
<b>Imperial</b>					
83037	458R	45° SAE Flares	1/8, 3/16, 1/4, 5/16, 3/8, 1/2, 5/8, 3/4 inch	1,6	1
41295	454-W	45° SAE Nominal Water Tube	3/8, 1/2, 3/4, 1	2,8	1
41300	455	45° SAE Flares	1/2, 5/8, 3/4, 7/8, 1	3,1	1
41162	377	37° SAE Flares	3/16, 1/4, 5/16, 3/8, 1/2, 5/8, 3/4	1,6	1
41285	375	37° SAE Flares	1/2, 5/8, 3/4, 7/8, 1	3,1	1
<b>Metric</b>					
50257	458MM	45° Flares	4, 4,75, 6, 8, 10, 12, 15, 16 mm	1,6	1

- No. 454W, No. 455 and No. 375 for aluminum, soft copper, steel, stainless steel, hard copper and brass. No. 458R, No. 458MM and No. 377 for aluminum, soft copper, stainless steel, hard copper, and brass thru wall thickness of ,035 inches.

# No. 345 Flaring Tool

Model 345 is a precision designed tool for producing 45° flares in soft copper, brass, aluminum, and mild steel tubing. A hardened, smooth cone provides fast, 45° flares either single or double lap. A single clamp screw provides for easy clamping and removal of tubing.



Cat. No.	Model No.	Type	Sizes	Weight kg	Std. Pack
<b>Imperial</b>					
23332	345	45° SAE Flares	3/16, 1/4, 5/16, 3/8, 7/16, 1/2, 5/8 inch	1,6	1
23337	345-DL	45° SAE-(double flares)	Above w/adapters for double lap flares; 3/16, 1/4, 5/16, 3/8, 7/16, 1/2, O.D. Tubing	1,3	1
31597	—		3/16" Double Lap Adapter	—	1
31602	—		1/4" Double Lap Adapter	—	1
31607	—		5/16" Double Lap Adapter	—	1
31612	—		3/8" Double Lap Adapter	—	1
31617	—		1/2" Double Lap Adapter	—	1
<b>Metric</b>					
23342	345MM	45° SAE Flares	6, 8, 10, 12, 14, 15, 16 mm	1,2	1
31502	—		Case Only	—	—

# Levels

RIDGID® measuring tools are manufactured to the most exacting standards; offering reliability precision and excellent value for money.

## Spirit Levels

### Magnetic Box Section Levels



- Extruded aluminium profile.
- Strong ceramic magnets.
- Solid acrylic vials.
- Patented plumb site reading system.
- Milled measuring surface (up to 1000 mm length).
- Electronically calibrated accuracy of 0,5 mm/m.

Cat. No.	Model No.	Length mm	# vials	Milled	Weight kg	Std. Pack
27561	380 - 40	400	2	●	0,5	1
27571	380 - 60	600	2	●	0,6	1
27581	380 - 80	800	2	●	0,8	1
74126	380 - 100	1000	2	●	1,2	1
74136	380 - 120	1200	4	—	1,3	1
74146	380 - 150	1500	4	—	1,7	1
74156	380 - 180	1800	4	—	1,9	1
74166	380 - 200	2000	4	—	2,0	1

### Magnetic Contractors Box Section Levels



- Wide extruded aluminium profile.
- Magnetic strip over entire length of level.
- Ergonomic non-slip handle.
- Solid acrylic vials.
- Patented plumb site reading system.
- Milled measuring surface.
- Electronically calibrated accuracy of 0,5 mm/m.

Cat. No.	Model No.	Length mm	# vials	Milled	Weight kg	Std. Pack
27591	382 - 60	600	3	●	0,7	1
27601	382 - 80	800	3	●	0,9	1

### Magnetic I-Beam Levels



- Aluminium I-beam profile.
- Magnetic strip over entire length of level.
- Tubular vials.
- Patented plumb site reading system.
- Protractor angle reference vial.
- Accuracy of 1,2 mm/m.

Cat. No.	Model No.	Length mm	# vials	Milled	Weight kg	Std. Pack
27621	383 - 40	400	3	—	0,50	1
27631	383 - 60	600	3	—	0,60	1
27641	383 - 80	800	3	—	0,80	1

### Cast Aluminium Levels



- Cast aluminium construction.
- Solid acrylic vials.
- Recalibration of vials possible.
- Milled measuring surface.
- Designed to withstand hammer blows.
- Electronically calibrated accuracy of 0,5 mm/m.

Cat. No.	Model No.	Length mm	# vials	Milled	Weight kg	Std. Pack
27651	384 - 40	400	2	●	0,5	1
74076	384 - 50	500	2	●	0,6	1
27661	384 - 60	600	2	●	0,7	1
27671	384 - 80	800	2	●	0,8	1





## Magnetic Cast Aluminium Levels



- Cast aluminium construction.
- Strong ceramic magnets.
- Solid acrylic vials.
- Recalibration of vials possible.
- Milled measuring surface.
- Designed to withstand hammer blows.
- Electronically calibrated accuracy of 0,5 mm/m.

Cat. No.	Model No.	Length mm	# vials	Milled	Weight kg	Std. Pack
74036	387 - 40	400	2	•	0,6	1
74046	387 - 50	500	2	•	0,7	1
74066	387 - 60	600	2	•	0,8	1
74056	387 - 80	800	2	•	0,9	1

## Magnetic Gradient Level



- Extruded aluminium profile.
- Strong ceramic magnets.
- Solid acrylic vials.
- Indicates 0% - 1% - 2% slopes.
- Milled measuring surface.
- Electronically calibrated accuracy of 0,5 mm/m.

Cat. No.	Model No.	Length mm	# vials	Milled	Weight kg	Std. Pack
27611	386 - 60	600	4	•	0,6	1

## Magnetic Torpedo Level



- Cast aluminium profile with plastic inserts.
- Magnetic strip over entire length of measuring surface.
- Tubular vials, 180° - 45° - 90°.
- V-groove to balance level on pipe.
- Light and compact, ideal for general purpose applications.
- Accuracy of 1,2 mm/m.

Cat. No.	Model No.	Length mm	# vials	Milled	Weight kg	Std. Pack
22398	395E	230	3	—	0,2	1

## Magnetic Pipe level



- Constructed from a strong plastic compound.
- Fitted with a central hinge that allows adjustment of level width.
- Tubular vials.
- Fitted with 4 magnets.
- Accuracy of 1,2 mm/m.

Cat. No.	Model No.	# vials	Milled	Weight kg	Std. Pack
27691	329	3	—	0,2	6

## Line Level

- Constructed from a strong plastic compound.
- Tubular vials.
- Accurate and lightweight.
- Specially designed to limit line sag.
- Equipped with a V-groove for use onto pipes.
- Supplied with a 30 m line.
- Pocket clip.



Cat. No.	Model No.	# vials	Milled	Weight kg	Std. Pack
27681	325-l	1	—	0,1	6



# Laser Levels

## 327N Series

### Pocket Laser Level

- ABS plastic housing built on aluminium frame.
- With line generator allowing transfer of laser dot to a laser line.
- Magnetic strip.
- Tubular vials.
- 650 nm Class II laser diode.
- Accuracy of 1 mm/m.
- Range: 30 m.



Cat. No.	Model No.	Length mm	# vials	Diode nm	Range m	Weight kg	Std. Pack
35881	327N	150	2	650	30	0,7	1

## 385 Series

### Laser Level

- Extruded aluminium profile.
- Solid high precision acrylic vials.
- Milled measuring surface.
- 650 nm Class II laser diode.
- Accuracy of 0,5 mm/m.
- Range: 50 m.



Cat. No.	Model No.	Length mm	# vials	Diode nm	Range m	Weight kg	Std. Pack
27711	385	400	2	650	50	0,5	1

# Gyro Light

### Self Levelling Laser

- Eliminates time consuming adjustment - creates automatically leveled lines within seconds.
- Pendulum operated self levelling system.
- Projects 1 horizontal and 1 vertical line.
- Accuracy of 0,25 mm/m.
- Supplied with carrying pouch.



Cat. No.	Model No.	Projection	Diode nm	Range m	Weight kg	Std. Pack
98116	Gyro Light	Horizontal / Vertical	650	15	1,5	1

Cat. No.	Model No.	Description	Weight kg	Std. Pack
98126	—	Tripod adaptor for Gyro Light	0,1	1



# Gyro II

## Self Levelling Laser

- Eliminates time consuming adjustment - creates automatically leveled lines within seconds.
- Pendulum operated self levelling system.
- Project 1 horizontal and 2 vertical lines.
- Accuracy of 0,25 mm/m.
- Fitted with 2 windows for 90° projection.
- Supplied with level holder, laser glasses and carrying case.

Cat. No.	Model No.	Projection	Diode nm	Range m	Weight kg	Std. Pack
33571	Gyro II	Horizontal / Vertical	625	15	1,5	1



# Accessories for Laser Levels

- All accessories have been specifically developed to give optimum performance with your laser levels.

Cat. No.	Description	327	385	Gyro Light	Gyro II	Weight	Std. Pack
27731	Tripod (Height, 1200 - 2150 mm)	—	• (1)	• (3)	• (2)	4,5	1
74206	Tripod (Height, 1750 - 3250 mm)	—	• (1)	• (3)	• (2)	7,5	1
27771	Levelling Disk	—	—	—	—	0,5	1
27761	Deflecting Prism	—	—	—	—	0,1	1
74216	Laser Glasses	—	—	—	•	0,1	1

(1) Laser levels require leveling disk for mounting onto tripods.  
 (2) Self-levelling lasers require level holder for mounting onto tripods (Standard equipment).  
 (3) Tripod adaptor for Gyro Light (Optional).



Aluminium tripods, light, easy to erect and transportable. All tripods are equipped with a 5/8" threaded stud, and ground pins for outside work.



Levelling disk

Laser Glasses

Deflecting Prism

